

Технические характеристики

По вопросам продаж и поддержки обращайтесь:

Алматы (7273)495-231	Казань (843)206-01-48	Новокузнецк (3843)20-46-81	Смоленск (4812)29-41-54
Архангельск (8182)63-90-72	Калининград (4012)72-03-81	Новосибирск (383)227-86-73	Сочи (862)225-72-31
Астрахань (8512)99-46-04	Калуга (4842)92-23-67	Омск (3812)21-46-40	Ставрополь (8652)20-65-13
Барнаул (3852)73-04-60	Кемерово (3842)65-04-62	Орел (4862)44-53-42	Сургут (3462)77-98-35
Белгород (4722)40-23-64	Киров (8332)68-02-04	Оренбург (3532)37-68-04	Тверь (4822)63-31-35
Брянск (4832)59-03-52	Краснодар (861)203-40-90	Пенза (8412)22-31-16	Томск (3822)98-41-53
Владивосток (423)249-28-31	Красноярск (391)204-63-61	Пермь (342)205-81-47	Тула (4872)74-02-29
Волгоград (844)278-03-48	Курск (4712)77-13-04	Ростов-на-Дону (863)308-18-15	Тюмень (3452)66-21-18
Вологда (8172)26-41-59	Липецк (4742)52-20-81	Рязань (4912)46-61-64	Ульяновск (8422)24-23-59
Воронеж (473)204-51-73	Магнитогорск (3519)55-03-13	Самара (846)206-03-16	Уфа (347)229-48-12
Екатеринбург (343)384-55-89	Москва (495)268-04-70	Санкт-Петербург (812)309-46-40	Хабаровск (4212)92-98-04
Иваново (4932)77-34-06	Мурманск (8152)59-64-93	Саратов (845)249-38-78	Челябинск (351)202-03-61
Ижевск (3412)26-03-58	Набережные Челны (8552)20-53-41	Севастополь (8692)22-31-93	Череповец (8202)49-02-64
Иркутск (395)279-98-46	Нижний Новгород (831)429-08-12	Симферополь (3652)67-13-56	Ярославль (4852)69-52-93
Россия (495)268-04-70	Киргизия (996)312-96-26-47	Казахстан (7172)727-132	

Mobile Column Lift Accessories

Stertil-Koni offers an extensive range of Mobile Column Lift accessories and options tailored to fit your specific needs.

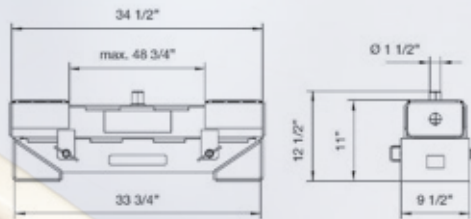
Multipurpose Adapters

Wheels-free lifting has never been easier. The frame-engaging design of Stertil-Koni's Multipurpose Adapters adds safety and versatility to Mobile Column Lifts by permitting front/rear vehicle lifting with just two Mobile Columns Lifts.

- + Modular design, easy to adapt to various applications
- + Individual components can be used to create requirement-specific solutions
- + A wide range of vertical height adjusters and contact adapters for various applications are available

Standard Adapter | 38000920

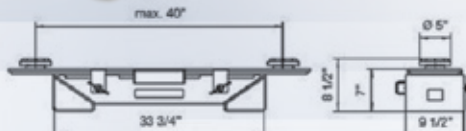
- For ST1064, ST1075, ST1085, ST1100
- Capacity: Depends on lift selected
- Adapter weight: 210 lbs.
- Includes:
 - + One adapter pin 1.57 inches diameter
 - + Two flat slideable adapters with anti-slip plate



38000920

Low Profile Adapter | 38000970

- For ST1064, ST1075, ST1085, ST1100
- Capacity: 5,500 lbs.
- Adapter weight: 176 lbs.
- Includes:
 - + Two rubber contact adapters



38000970

Adapter Cart | 38010950

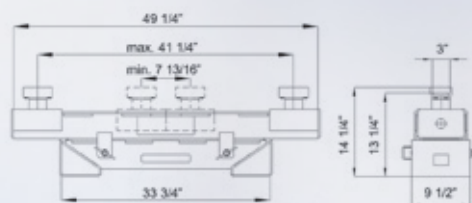
Stertil-Koni offers an easy-to-maneuver wheeled Adapter Cart for storing two Multipurpose Adapters.



38010950

Tailored to fit

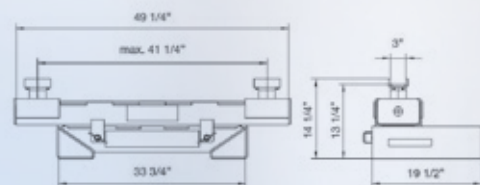
Agricultural equipment is easily
lifted and serviced with a
Multipurpose Adapter



38000950

Extra Wide Adapter | 38000950

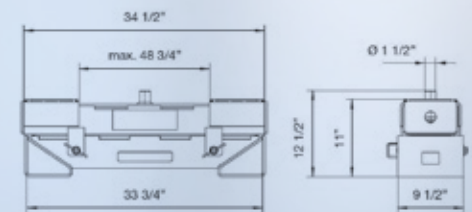
- For ST1064, ST1075, ST1085, ST1100
- Capacity: Depends on lift selected
- Adapter weight: 243 lbs.
- Includes:
 - + Two flat sliding adapter receivers
 - + Two U-shaped pickup adapters



38000990

Extended Reach Adapter | 38000990

- For ST1064, ST1075, ST1085, ST1100
- Capacity: 14,500 lbs.
- Adapter weight: 353 lbs.
- Includes:
 - + Two flat sliding adapter receivers
 - + Two U-shaped pickup adapters



38010920

Agricultural Adapter | 38010920

- For ST1065
- Capacity: Depends on lift selected
- Adapter weight: 254 lbs.
- Includes:
 - + One adapter pin 1.57"
 - + Two flat slideable adapter with anti-slip top plates

Adapter Accessories

Steril-Koni offers a wide range of pickup adapters for various purposes.

- | | | |
|-----------|-----------|---|
| 1 | 2 | 1 Flat sliding adapter receiver
38000945 |
| | | 2 U-shaped steel pickup pad
4310.09.06.00 |
| 3 | 4 | 3 Flat steel pickup pad 4310.09.04.00 |
| | | 4 U-shaped pickup adapter
59001091 |
| 5 | 6 | 5 Standard support adapter
39225988 |
| | | 6 Tooth steel square pickup pad
39225983 |
| 7 | 8 | 7 Adapter pin 1.57" 38000921 |
| | | 8 Flat slideable adapter with anti-slip
top plate 32591051 |
| 9 | 10 | 9 Vertically adjustable riser with height
adjust 32591020 |
| | | 10 V-shaped steel pickup pad
4310.09.05.00 |
| 11 | 12 | 11 Support extension 1.5" 35000306 |
| | | 12 Support extension 3.5" 37003909 |
| 13 | 14 | 13 Support extension 6.3" 37003916 |
| | | 14 Support extension 10" 37003925 |
| | | |

your needs

Crossbeams

Users requiring Mobile Column Lifts to engage a lifting point other than the tire/rim assemblies (such as a fifth wheel or frame), are able to utilize Stertil-Koni Crossbeams to safely lift a variety of vehicles and trailers.

- + Lift trailers by the chassis
- + Lift trailers at kingpin coupling
- + Lift vehicles with low ground clearance
- + Lift three-wheel street sweepers
- + Lift trucks fitted with front and side hanging snow plows

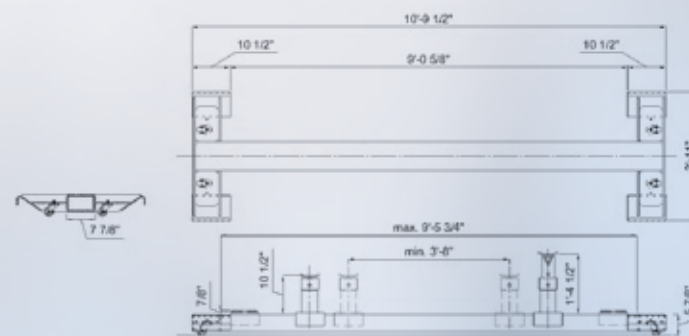
* All Crossbeams fit all standard Mobile Column Lifts.

A Low Profile Crossbeam hoists a school bus allowing wheels-free access



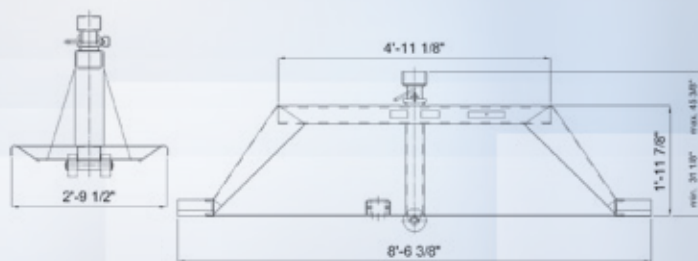
Low Profile Crossbeam | 32591100

- For ST1064, ST1075, ST1085, ST1100
- Capacity: 18,800 lbs.



32591100

A Kingpin Crossbeam supports a military trailer on Mobile Column Lifts



32592000

Kingpin Crossbeam | 32592000

- For ST1064, ST1075, ST1085, ST1100
- Capacity: 16,000 lbs.

Traverse Crossbeam | 18-9081A-03

For ST 1064, ST 1075, ST 1085, ST 1100



Traverse Crossbeam makes easy work of lifting vehicles equipped with front and side hanging snow plows



Mobile Column Lifts have a Mechanical Locking System for added safety that starts at just 5" above floor height and continues throughout the full range of travel with locking intervals of 1 3/8"

Base Frame & Lifting Fork Extensions

Base Frame Extensions — Used with Lifting Fork Extensions for vehicles with recessed wheels (ST1064, ST1075, ST1085, ST1100)

Fork Extensions — Used with Base Frame Extensions (20" in overall length) for vehicles with recessed wheels (ST1064, ST1075, ST1085 and ST1100)

PRODUCT NAME	PER MOBILE COLUMN	LIFTING FORK STYLE	MODEL NO.
Set of 2 Base Frame Extensions	14,500 lbs.	Fixed wheels	34400910
Set of 2 Base Frame Extensions	14,500 lbs.	Retractable wheels	32710915
Single Fork Extension with Integrated Reduction Sleeve and Lock (right side)	14,500 lbs.	Adjustable forks	34200930
Single Fork Extensions with Integrated Reduction Sleeve and Locks (left side)	14,500 lbs.	Adjustable forks	34200935
Set of 2 Fork Extensions with Locks	14,500 lbs.	Adjustable forks	32700930



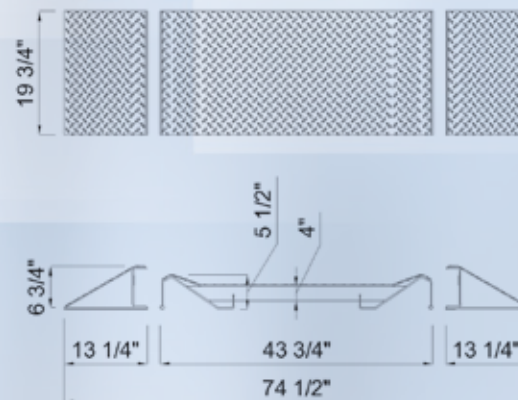
Mobile Column with base and Fork Extensions installed.



Large Wheel Adapter

The Stertil-Koni Large Wheel Adapter is designed to service vehicles and agricultural equipment with extremely large diameter wheels. This Mobile Column Lift Adapter allows lifting of vehicles with wheel diameters of up to 85".

COLUMN LIFT	LARGE WHEEL ADAPTER MODEL	STANDARD WITH ADAPTER KIT
ST1065	32790210	Drive on/drive off ramps
ST1075 & ST1085	59002550	Drive on/drive off ramps
ST1175	32800910	Drive on/drive off ramps



Remote Control for Mobile Column Lifts

The Stertil-Koni Remote Control allows the operator to utilize the ebright Smart Control System, a 7" full-color touch-screen console on Mobile Column Lifts within the cable range.

- **38007789**
- 32½' cable
- Quick disconnect
- Emergency stop for added safety
- Compatible with all Stertil-Koni Mobile Column Lifts
- UL Approved



Lighting Fixtures

Illumination is available for all Mobile Column Lifts via two optional IP-67 rated, UL approved lighting fixtures. These lights ensure that the workspace around the lift is well illuminated to increase safety.

Lighting fixtures for:

- VDC wireless columns utilize LED technology | **38008900**
- VAC cabled columns utilize fluorescent technology | **38004900**

Light Kits come with:

- 2 Lights
- Brackets
- Cables



Forklift Adapter Kit

Stertil-Koni Forklift Adapter kits have been specifically engineered to efficiently lift heavy forklifts, which often have uneven weight distribution between the front and rear axles. Designed for use in conjunction with Stertil-Koni Mobile Column Lifts, these Adapter Kits can safely support up to 32,000 lbs. and work with three- and four-wheel forklifts.

- + Direct engagement with forklift body for maximum stability
- + Compatible with three- and four-wheel forklifts
- + Wheels-free lifting
- + 10 piece kit for 4-wheel applications
- + 12 piece kit designed for 3-wheel applications
- + Powder coated finish ensuring resistance to corrosion
- + **10 piece Four-Wheel Forklift Adapter Kit | 32593000**
- + **12 Piece Three-Wheel Forklift Adapter Kit | 32593100**



A Four-Wheel Forklift Adapter Kit on Mobile Column Lifts easily supports a forklift

View of Four-Wheel Forklift Adapter Kit undercarriage

SKYLIFT Accessories

Stertil-Koni offers an extensive range of SKYLIFT accessories and options tailored to fit your specific needs.



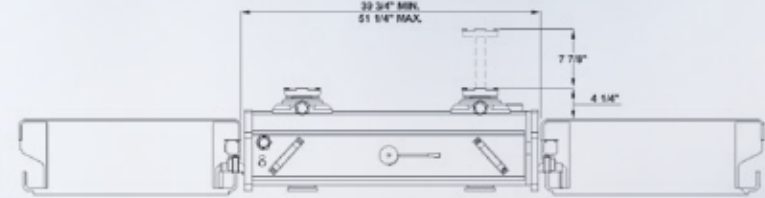
Jacking Beams

Stertil-Koni Jacking Beams are used for wheels-free access on the SKYLIFT. These air-driven hydraulic twin-piston Jacking Beams come in three models and are available for all SKYLIFTS. Capacities range from 26,400 lbs. to 44,000 lbs.

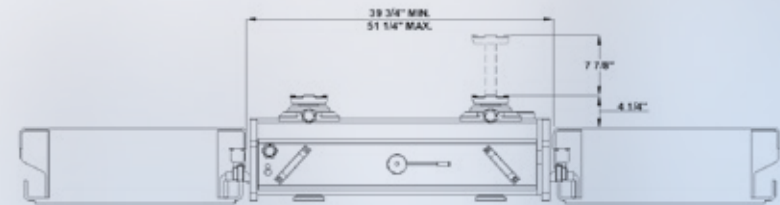
- + Pistons can be operated individually or in tandem
- + Equipped with independent Mechanical Locking System with gravity engaged locking pawls
- + Transversely sliding pistons
- + Adjustable frame (23 1/4"–35" or 33 1/2"–45 1/4") to fit all lifts
- + Hold-to-run controls for safety
- + Overload protection
- + Supplied with (2) 4" extensions, plus (2) flat adapters



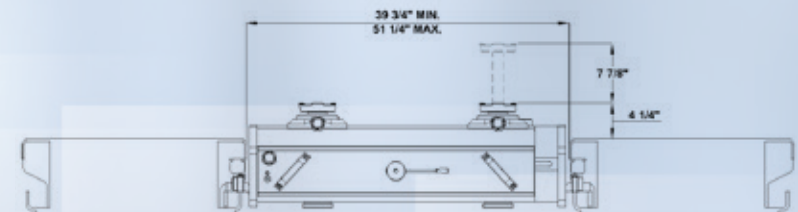
JB120-2 | 39615250



JB160-2 | 39616160



JB200-2 | 39618160



Jacking Beam Specifications

Anti-Skid Options

Stertil-Koni offers two Anti-Skid options:

- + Two-part epoxy coating
- + Self-adhesive, peel and stick Aluminum Diamond Plates with a high-shine finish | **66701106**

MODEL	JB120-2	JB160-2	JB200-2
Capacity	26,400 lbs.	35,200 lbs.	44,000 lbs.
Stroke	7 ⁷ / ₈ "	7 ⁷ / ₈ "	7 ⁷ / ₈ "
Minimum Height	4 ¹ / ₄ "	4 ¹ / ₄ "	4 ¹ / ₄ "
Maximum Height	4 ¹ / ₄ " + 7 ⁷ / ₈ "	4 ¹ / ₄ " + 7 ⁷ / ₈ "	4 ¹ / ₄ " + 7 ⁷ / ₈ "
Width Range Small Frame	23 ¹ / ₄ " – 35"	23 ¹ / ₄ " – 35"	23 ¹ / ₄ " – 35"
Width Range Wide Frame	33 ¹ / ₂ " – 45 ¹ / ₄ "	33 ¹ / ₂ " – 45 ¹ / ₄ "	33 ¹ / ₂ " – 45 ¹ / ₄ "
Depth	26 ¹ / ₄ "	26 ¹ / ₄ "	26 ¹ / ₄ "
Lifting Points (Distance)	7 ⁷ / ₈ " – 35 ³ / ₈ "	7 ⁷ / ₈ " – 35 ³ / ₈ "	7 ⁷ / ₈ " – 35 ³ / ₈ "
Air Supply	116 – 174 PSI	116 – 174 PSI	120 – 175 PSI
Weight	446 lbs.	446 lbs.	446 lbs.

* The capacity of the jacking beam cannot exceed 0.66 X the lift capacity. Please check with your local distributor as to which Stertil-Koni lifting systems, accessories and shop equipment are ALI certified.

Remote Control

The Stertil-Koni Remote Control allows the user to operate the lift remotely from the control box. The UL approved remote comes equipped with emergency stop and a 33' cable.

- + Remote control UL approved with 32' 10" cable | **34007940**



Two-part epoxy anti-skid in grey and red



Aluminum Diamond Plates



Tandem Lift Synchronization Kit

The tandem kit allows two lifts to be operated independently or two lifts operating in tandem.

This tandem SKYLIFT supports an extra-long auto transporter



Compressed Air in Platforms

The Compressed Air in Platforms option allows the addition of a compressed air piping system onto the platforms of the SKYLIFT for convenient use of air tools.

- + Air Installation Kit with 11.5' spiral hose | **39509105**
- + Air Pipe Kit with 8' air pipe, brackets and one outlet | **39509100**
- + Depending on length of lift, more than one kit may be needed



SKYLIFT Accessories

Set of two Reverse Roll-Off Protection units containing one left and one right version | **32591100**

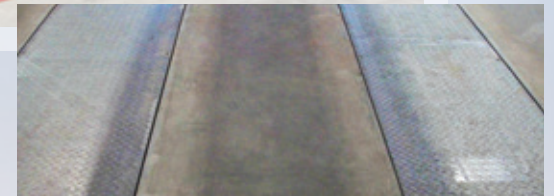
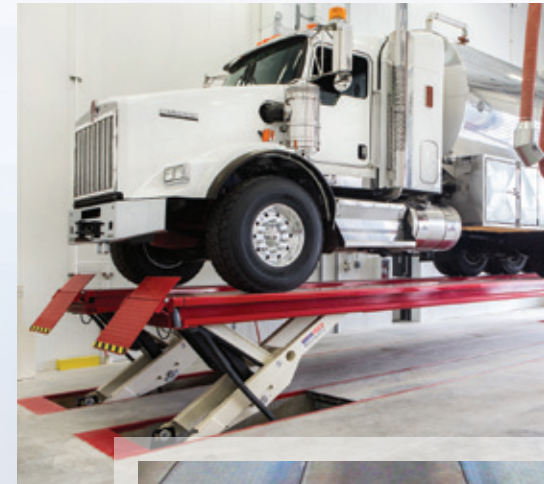
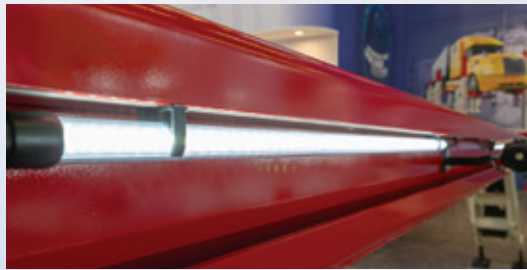


fit your needs

LED Lighting

Stertil-Koni Platform LED lighting is available for SKYLIFT. These lighting kits consist of directional high-output LED lamps. These lamps are virtually unbreakable and as bright as conventional fluorescent tubes. Pre-assembled 40" tubes with transformer and mounting hardware.

- + Modular plug-and-play design for expandability
- + Slimline design
- + IP-65 water resistant
- + Eco-friendly, ultra-long life LED



Automatic Pit Cover Plates

Automatic Pit Cover Plates are an option that utilizes hot-dip galvanized plates as an extendable floor in the foundation of a Flush Mounted SKYLIFT. The Cover Plates travel up as the lift rises.

- + Rated for 3,300 lbs.
- + Mechanically locked into place when SKYLIFT is elevated
- + Mechanically driven – no additional power requirements

SKYLIFT MODELS	PLATFORM LENGTH	LED FIXTURES	LED LIGHTING KIT
SKY 200 / SKY 250	23' 26"	8	41309110
SKY 200 / SKY 250	30' 33"	10	41309120
SKY 200 / SKY 250	40"	12	41309130
SKY 200 / SKY 250	48"	14	41309145
Platform extension		2 plus brackets and cable set	41309135
Factory installation	Any length		OPVL39100

All models come with 1 power transformer / UL approved.

DIAMONDLIFT Accessories

Stertil-Koni offers an extensive range of DIAMONDLIFT accessories and options tailored to fit your specific needs.



Transit buses are easily supported by Stertil-Koni's DIAMONDLIFT



Remote Control | **RBV050-00**

An optional, detachable, wired Remote Control is available. This full-function Remote Control with an Emergency Stop operates in addition to the lift's standard control console. The Remote Control comes with 35' cable and quick disconnect.

A longer cable is available upon request.



Inground Adapter Kits

Inground Adapter Kits are engineered to facilitate more efficient lifting by engaging the front and rear lifting points on buses and trucks. One kit is expressly designed for transit buses and another is suitable for both trucks and school buses.

Stertil-Koni's school bus and truck adapters are constructed to be wider and taller, while transit bus adapters are flatter and broader. The adapters are optimized for both new vehicles with the latest axles as well as older vehicles that have been on the road for some time.

Each kit contains various front and rear adapters and is included, as standard, with new inground lift purchases from Stertil-Koni.

- + Transit bus adapters | **APF01-00D**
- + School bus and truck adapters | **APF02-00D**

Convenient and

Stertil-Koni Offers Easy Storage Solutions



Differential Adapter | A34122-00

The Stertil-Koni DIAMONDLIFT Differential Adapter allows vehicles to be lifted by the rear differential. Lifting by the rear differential is particularly helpful when the axle tube (the typical lifting point for most heavy duty vehicles) is obstructed by sway bars, automatic snow chains, or other elements that make it difficult to reach the axle tube.

The adapter is ideal for lifting and servicing small, medium and large pickup trucks, as well as smaller school buses, with a maximum axle weight of 10,000 lbs. The adapter is an ALI/ALCTV certified accessory for all models of DIAMONDLIFT.

This adapter “cradles” the differential and is self-centering due to its spring-loaded ball bearings (meaning it centers itself underneath the differential), making the setup and use quick, easy, convenient and safe.

Once engaged, the spring-loaded ball bearings retract and allow full contact between the Differential Adapter and the lifting bolster to ensure safe and stable lifting.



Adapter Cart

ST130-00

- Heavy duty casters allow for easy relocation
- Allows storage of all adapters



Adapter Stand

AS100-00

- Fixed model anchors to the floor
- Allows storage of all adapters

Safe



Automatic Sump Pump

D662P-00

Stertil-Koni offers Automatic Sump Pumps to remove any accumulation of liquids (e.g. snow melt, rain water runoff, leaked shop fluids) from lift pits.

Red/Green Stack Light

BEACON-00

The Home Light beacon, when illuminated green, informs the operator that all lifting units are fully lowered and it is safe for the vehicle to enter or exit the bay.



The state-of-the-art DIAMONDLIFT provides heavy duty lifting in a variety of workshop situations

ECOLIFT Accessories

Stertil-Koni offers an extensive range of ECOLIFT accessories and options tailored to fit your specific needs.

Inground Adapter Kits

Inground Adapter Kits are engineered to facilitate more efficient lifting by engaging the front and rear lifting points on buses and trucks. One kit is expressly designed for transit buses and another is suitable for both trucks and school buses.

Stertil-Koni's school bus and truck adapters are constructed to be wider and taller, while transit bus adapters are flatter and broader. The adapters are optimized for both new vehicles with the latest axles as well as older vehicles that have been on the road for some time.

Each kit contains multiple front and rear adapters, and are included, as standard, with new inground lift purchases from Stertil-Koni.

- + Transit bus adapters | **APF01-00E**
- + School bus and truck adapters | **APF02-00E**



Truck and School Bus adapters APF01-00E



Transit Bus adapters APF02-00E



Remote Control | RBV050-00

An optional, detachable, wired Remote Control is available. This full-function Remote Control with an Emergency Stop operates in addition to the lift's standard control console. The Remote Control comes with 35' cable and quick disconnect. A longer cable is available upon request.

Stertil-Koni Offers Easy Storage Solutions



Adapter Cart

ST110-00

- Heavy duty casters allow for easy relocation
- Allows storage of all adapters and floor cover plates

Adapter Stand

AS100-00

- Fixed model anchors to the floor
- Allows storage of all adapters



Red/Green Stack Light

BEACON-00

The Home Light beacon, when illuminated green, informs the operator that all lifting units are fully lowered and it is safe for the vehicle to enter or exit the bay.

FREEDOMLIFT Accessories

Stertil-Koni offers an extensive range of FREEDOMLIFT accessories and options tailored to fit your specific needs.

2-Post Lift Adapters & Height Extensions

For lifting a variety of vehicles, Stertil-Koni has designed a wide-range of stackable adapters.

LED Lighting

35000950

Designed with safety in mind, the Stertil-Koni LED Lighting Set brightly illuminates the undercarriage of the raised vehicle. The 2-Post FREEDOMLIFT series LED Lighting Set is water-resistant, UL approved and comes with four LED lights, a power transformer, brackets and cables.

- + Modular plug-and-play design for expandability
- + Slimline design
- + 24VDC operation
- + Eco-friendly, ultra-long life LEDs



Model SK 2.16

- 1** Telescopic threaded pickup points, range 6" to 9" | **330003915**
- 2** Externally threaded bushing to hold any contact adapter | **35000301**
- 3** Flat rubber capped contact adapter with external threads to provide height adjustment 5" | **30003100**
- 4** Support extension 1.5" | **35000306**
- 5** Support extension 3.5" | **37003909**
- 6** Support extension 6.3" | **37003916**
- 7** Support extension 10" | **37003925**

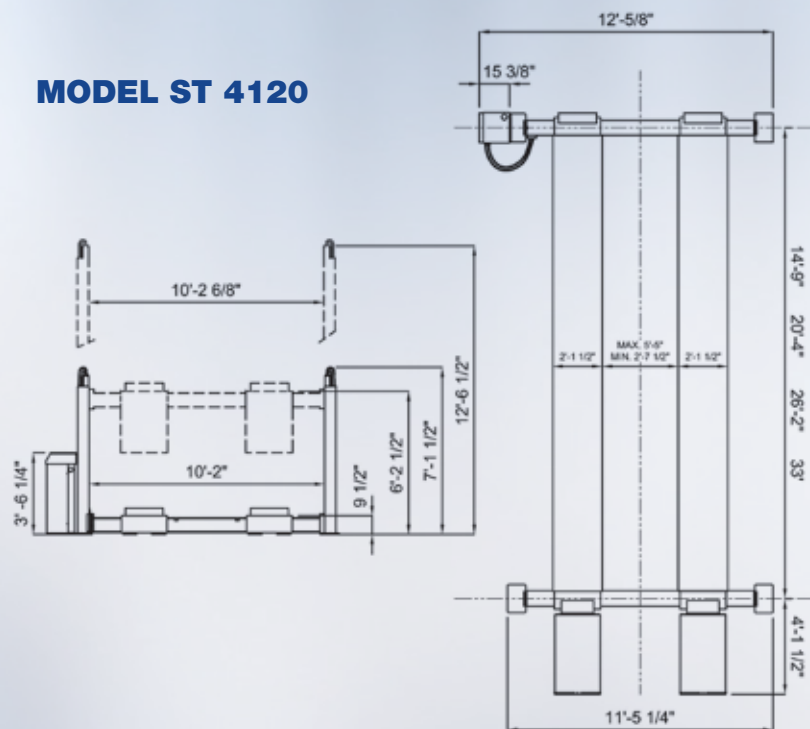


Models SK 2.20, SK 2.26 & SK 2.30

- 1** Toothed steel slip-in pickup pad, square 4 5/16" | **39225983**
- 2** Flat steel pickup pad | **4310.09.04.00**
- 3** U-shaped steel pickup pad | **4310.09.06.00**
- 4** V-shaped steel pickup pad | **4310.00.05.00**
- 5** Support extension 1.5" | **35000306**
- 6** Support extension 3.5" | **37003909**
- 7** Support extension 6.3" | **37003916**
- 8** Support extension 10" | **37003925**

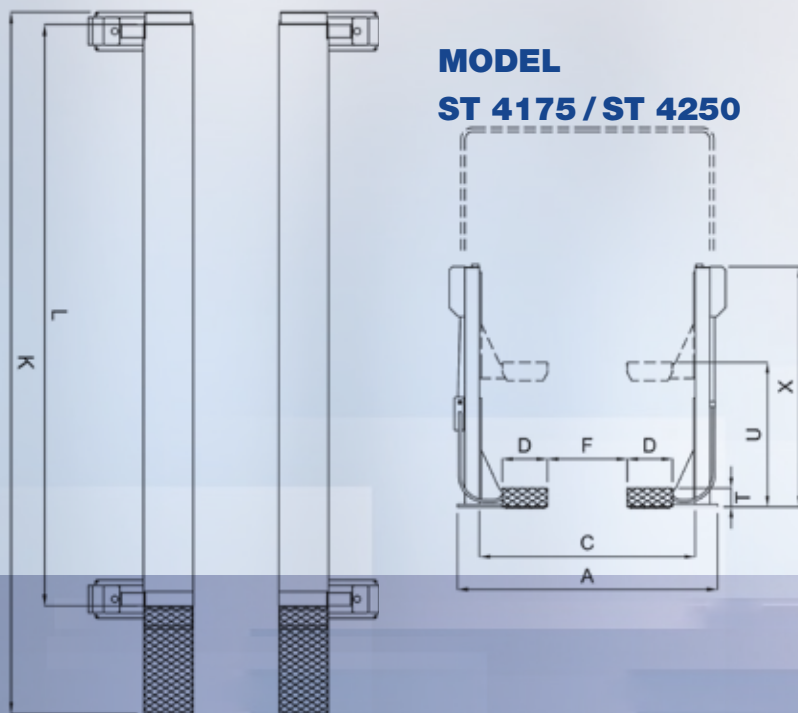


MODEL ST 4120



MODEL

ST 4175 / ST 4250



4-Post Lift Accessories

Steril-Koni offers an extensive range of 4-Post Lift accessories and options tailored to fit your specific needs.

LED Lighting

Designed with safety in mind, these LED lighting sets brightly illuminate the undercarriage of the raised vehicle. LED Lighting Sets are available for all platform sizes. The UL approved sets include LED fixtures, a power transformer and cables.

- + Modular plug-and-play design for expandability
- + Slimline design
- + 24VDC operation
- + Eco-friendly, ultra-long life LEDs



4-POST MODELS	PLATFORM SIZE	LED FIXTURES	LED LIGHTING KIT
ST 4120	15'	4	41229350
ST 4120	20'	6	41219350
ST 4120	26'	8	41209350
ST 4120	33'	10	41239350
ST 4175/4250	20'	6	42539170
ST 4175/4250	26'	8	42519170
ST 4175/4250	30' & 33'	8	42529170
ST 4175/4250	38'	12	42549170

Compressed Air in Platforms

Stertil-Koni offers a system with parts and hardware to install a compressed air piping system into the platforms of the 4-Post Lift, allowing connection for vital air tools.

The Compressed Air Installation Kit comes with an 8' air pipe, one outlet and an 11' slimline hose. This provides an approximate 20' reach.

- + Air kit for ST 4120, ST 4175, ST 4250 comes with 8' air pipe, brackets and one outlet | **39509100**
- + Hose kit for ST 4120, ST 4175, ST 4250 comes with 11.5' spiral hose | **39509105**
- + Depending on length of lift, more than one kit may be needed



Third Platform for Forklifts

Stertil-Koni offers a Third Platform for raising and servicing three-wheel forklifts, only available with ST 4120.

- + For platform length 49"- capacity 4,000 lbs. Not used in combination with long drive-on/off ramps. | **41209100**
- + For platform length 49"- capacity 4,000 lbs. Used only in combination with long drive-on/off ramps | **41209200**



Remote Control

The Stertil-Koni Remote Control allows the user to operate the lift remotely from the control box. The UL approved remote comes equipped with emergency stop and a 33' cable.

- + Remote control UL approved with 32' 10" cable | **34007940**



Smart Options

Jacking Beam Specifications



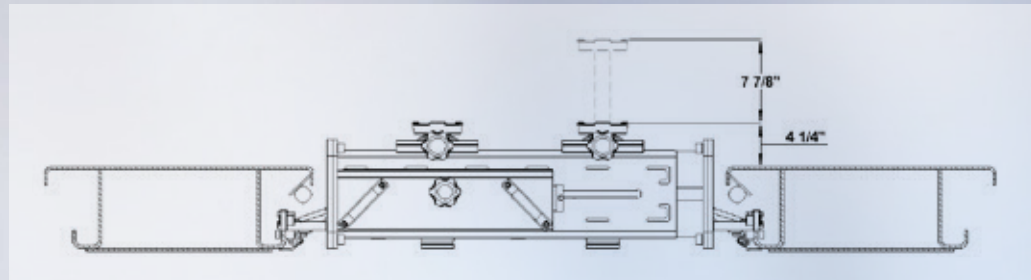
Jacking Beams

Stertil-Koni Jacking Beams are used for wheels-free access on 4-Post Lift models. These air-driven hydraulic twin-piston Jacking Beams come in four models and are available for all 4-Post models. Capacities range from 17,600 lbs. to 44,000 lbs.

- + Pistons can be operated individually or in tandem
- + Equipped with independent Mechanical Locking System with gravity engaged locking pawls
- + Transversely sliding pistons
- + Adjustable frame (23 1/4"–35" or 33 1/2"–45 1/4") to fit all lifts
- + Hold-to-run controls for safety
- + Overload protection
- + Supplied with (2) 4" extensions, plus (2) flat adapters

MODEL	JB80-2	JB120-2	JB160-2	JB200-2
Capacity	17,600 lbs.	26,400 lbs.	32,500 lbs.	44,000 lbs.
Stroke	7 7/8"	7 7/8"	7 7/8"	7 7/8"
Minimum Height	4 1/4"	4 1/4"	4 1/4"	4 1/4"
Maximum Height	4 1/4" + 7 7/8"	4 1/4" + 7 7/8"	4 1/4" + 7 7/8"	4 1/4" + 7 7/8"
Width Range Small Frame	23 1/4"–35"	23 1/4"–35"	23 1/4"–35"	23 1/4"–35"
Width Range Wide Frame	33 1/2"–45 1/4"	33 1/2"–45 1/4"	33 1/2"–45 1/4"	33 1/2"–45 1/4"
Depth	26 1/4"	26 1/4"	26 1/4"	26 1/4"
Lifting Points (Distance)	7 7/8"–35 3/8"	7 7/8"–35 3/8"	7 7/8"–35 3/8"	7 7/8"–35 3/8"
Air Supply	116–174 PSI	116–174 PSI	116–174 PSI	120–175 PSI
Air Consumption	92.5 gpm	92.5 gpm	92.5 gpm	92.5 gpm
Weight	446 lbs.	446 lbs.	446 lbs.	446 lbs.

* The capacity of the jacking beam cannot exceed 0.66 X the lift capacity. Please check with your local distributor as to which Stertil-Koni lifting systems, accessories and shop equipment are ALL certified.



Extended Length Ramps

Additional ramps are available in multiple lengths to facilitate the lifting of very low-clearance vehicles. Various lengths and accessories are available upon request.

- + Set of long drive on/off ramps, length 63" | **41209010**



Superior Solutions for Today's Maintenance & Servicing Demands

***Great equipment
to support
great lifts***

Stertil-Koni USA is the leader in the heavy duty vehicle lift industry, recognized for its state-of-the-art bus lifts and truck lifts. Stertil-Koni brings the very best in engineering and technologically advanced lifting solutions to its customers throughout North America, as well as unparalleled after-sales service from its factory-trained local distributors. The Stertil-Koni product range offers everything a shop needs to safely and effectively accomplish a broad range of maintenance and servicing requirements – quickly, efficiently and expertly.



Shop Equipment

Comprehensive Stertil-Koni Heavy Duty Shop Equipment



SHOP EQUIPMENT

Stertil-Koni's mission is to maximize the safety and efficiency of your maintenance and service facility. Stertil-Koni offers a comprehensive range of heavy duty shop equipment to meet all your maintenance needs. Our equipment delivers superior design, enhanced ergonomics, safety, durability, and high performance. Explore our exclusive line of shop equipment including Support Stands, Transmission Jacks, Wheel Dollies, Floor Pit Jacks, LED Lighting and more.

Support Stands

Stertil-Koni's Support Stands, indispensable for many of today's leading shops, are engineered to support trucks, buses and other heavy vehicles facilitating a variety of maintenance practices.

All Stertil-Koni Support Stands are statically tested to 200% of the rated load capacity.

Tilt & Roll

- ✦ Heavy steel framing manufactured to the highest industry standards
- ✦ Ergonomic design promotes health and safety
- ✦ Secure locking pin with steel retaining cable
- ✦ Advanced mobility with built-in wheels
- ✦ Spring-loaded center tube
- ✦ Up to six inches of fine adjustment via an ACME screw (model dependent)

MODEL	CAPACITY	HEIGHT	HEAD
SKCV 5480-07	14,000 lbs.	54"–80"	1 fixed steel head
SKCP 5278-09	18,000 lbs.	52"–78"	1 fixed steel head
SKMH 3658-12	24,000 lbs.	36"–58"	2 interchangeable heads
SKMH 5480-12	24,000 lbs.	54"–80"	2 interchangeable heads
SKCVP 3658-18	36,000 lbs.	36"–58"	1 fixed wooden head
SKCVP 5480-18	36,000 lbs.	54"–80"	1 fixed wooden head

No Wheels

MODEL	CAPACITY	HEIGHT	PIN/ADJUST	WEIGHT
SKCP 1220-10	20,000 lbs.	12"–20"	Pin stop	27 lbs.
SKCV 1828-10	20,000 lbs.	18"–28"	Fine adjust	57 lbs.
SKCP 1830-10	20,000 lbs.	18"–30"	Pin stop	39 lbs.
SKCP 2644-10	20,000 lbs.	26"–44"	Pin stop	42 lbs.



Simple,



JS-L12

Fixed Model

- + Heavy steel framing manufactured to the highest industry standards
- + Ergonomic design promotes health and safety
- + Secure locking pin with steel retainer
- + 4 pin stops
- + Fixed flat adapter

MODEL	PRODUCT NO.	CAPACITY	HEIGHT	WEIGHT
JS-L12	39225650	26,500 lbs.	14"–21"	40 lbs.

Folding Models

- + Heavy steel framing manufactured to the highest industry standards
- + Ergonomic design promotes health and safety
- + Comes with flat adapter, U-shape adapter and V-shape adapter
- + Fine adjuster
- + Folding with casters
- + Certified by the American Society of Mechanical Engineers (ASME) safety standards for Portable Automotive Service Equipment (PASE)
- + Optional space-saving storage bracket

MODEL	PRODUCT NO.	CAPACITY	HEIGHT	LOCK POS.
JS-M8	39225645	18,000 lbs.	30"–51"	7
JS-H8	39225625	18,000 lbs.	50"–80"	10
JS-M12	39225635	26,500 lbs.	30"–51"	7
JS-H12	39225615	26,500 lbs.	50"–80"	10



JS-M8 / JS-H8



JS-M12 / JS-H12



Safe & Essential

Hydraulic Transmission Jacks

Transmission removals can be daunting. Simplify the task with a durable and reliable Stertil-Koni heavy duty Hydraulic Transmission Jack. Our Hydraulic Transmission Jacks are engineered to safely facilitate the removal of transmissions as well as other unwieldy undercarriage components while reducing the physical toll on the shop technician.

Motorized

- + Full hydraulic operation: compressed air or battery powered
- + X-style base frame for additional stability and access to under chassis components
- + Lifting speed of 30" per minute
- + Compressed air model includes regulator, filter, and lubricator
- + Battery model includes smart charger
- + Hand pump to fine-tune positioning
- + Large support table with bidirectional tilt with nylon retaining straps
- + Tilt up to 12 degrees
- + Swiveling locking rear wheels to facilitate narrow radius turns

MODEL	CAPACITY	POWER	TABLE SIZE	BASE SIZE
SKTJ 401-A	3,500 lbs.	Pneumatic	26"X16"	38"X52"
SKTJ 401-C	3,500 lbs.	Pneumatic	16"X13"	38"X52"
SKTJ 401E-A	3,500 lbs.	12 VDC	26"X16"	38"X52"
SKTJ 402-B	3,500 lbs.	Pneumatic	20"X14"	34"X48"
SKTJ 402E-B	3,500 lbs.	12 VDC	20"X14"	34"X48"



Heavyweight



SKTJ 402

Manual Operation

- + Easy to use manual hydraulics, foot activated
- + Galvanized support saddle and base frame
- + Precise adjustment for positioning of transmission
- + Hand-operated dead man's release for optimum safety when lowering
- + Built-in overload valve
- + Sturdy swivel castors for stability and maneuverability

MODEL	PRODUCT#	CAPACITY	HEIGHT	CRADLE SIZE	WEIGHT
TJ10	39640200	2,200 lbs.	46"-78"	22"X22"	88 lbs.
TJ12	39640250	2,640 lbs.	35"-75"	28"X28"	154 lbs.



TJ-10



TJ-12



SKTJ 402

Jobs Made Simple

Manual Transmission Jack Options

Heavy Duty Adjustable Saddle

Product #39630140

- + Capacity 2,200 lbs.
- + 10° tilt in all directions for accurate dismounting and re-mounting of transmissions
- + Low minimum height for wide range of applications
- + Table dimensions 20"X15"
- + Includes 2 straps and 4 magnetic rubber support blocks
- + Weight 55 lbs.



39630140

Saddle

Product #9059500

- + Round steel contact adapter
- + For mounting springs, fuel tanks, etc.



9059500

Rubber Lifting Cushion

Product #3601400

- + Used with saddle #9059500
- + Protects vehicle body



3601400

** Options not available on all models.*

Wheel Dollies

Wheel and tire maintenance ranks among the most back-breaking tasks in maintenance shops across North America. Add ergonomic convenience to your facility with the Stertil-Koni Wheel Dolly and the picture gets brighter. This fully hydraulic versatile shop tool offers support for virtually all heavy vehicle wheel assemblies, from vans, buses, and trucks to agricultural, military, and industrial machinery. Additionally, it offers support for brake drums, fuel tanks, and other ungainly overhead maintenance.

Motorized

- + Fully hydraulic operation: powered by compressed air or 12 VDC battery
- + Easily handles single and dual wheel applications
- + Lifting forks incorporate rollers to allow rotation of wheel assembly to align wheel studs
- + Lifting forks tilt through activation of hand pump for precision bearing alignment
- + Tilt is 10 degrees above and 4 degrees below horizontal
- + Nylon retaining strap secures load
- + Protective steel cover to prevent foot injuries and increase stability
- + Wheel diameter is 36" to 48"

MODEL	CAPACITY	POWER	LIFTING HEIGHT	SPEED PER MINUTE
SKWD 501*	850 lbs.	Pneumatic	52"	78"
SKWD 500	1,000 lbs.	Pneumatic	52"	78"
SKWD 500E	1,000 lbs.	12 VDC	52"	78"
SKWD 500D74	1,000 lbs.	Pneumatic	74"	78"
SKWD 500E74	1,000 lbs.	12 VDC	74"	78"

* Counterbalance design for Platform Lifts



SKWD 500



SKWD 500



SKWD 501

Key Player in Shop



WDA 500



WD 1500NT



SKWD 500D74



#39650210

Manual Operation

- + Specially designed adjustable side lifting arms accommodate agricultural and industrial wheels with larger diameters and widths — even deep tread tractor tires
- + Lifting arms incorporate rollers to allow rotation of wheel assembly for proper alignment
- + Robust and easy to use wheel retaining bracket for added safety
- + Simple manual operation by foot

MODEL	PRODUCT#	CAPACITY	LIFTING POWER	WHEEL HEIGHT	DIAMETER
WDA 500	39650100	1,100 lbs.	Manual	28"	10"–51"
WD 1500NT*	39650200	3,300 lbs.	Manual	54"	39"–94"
WD 1500N*	39650150	3,300 lbs.	Manual	54"	39"–94"

* Agriculture use

Manual Wheel Dolly Option

Crane Arm

Product #39650210

- + For model WDA500
- + Capacity 550 lbs.
- + Mounted telescopic crane arm transforms the WDA into a universal lifting tool
- + Offers efficiency and good ergonomics when lifting disc brakes, brake drums, calipers, etc.
- + Swivels aside for quick reversion to wheel removal operation
- + Fitted with 360° pivoting hook

Safety

Floor Pit Jacks

Stertil-Koni has taken a traditional standard air hydraulic pit jack and made it better.

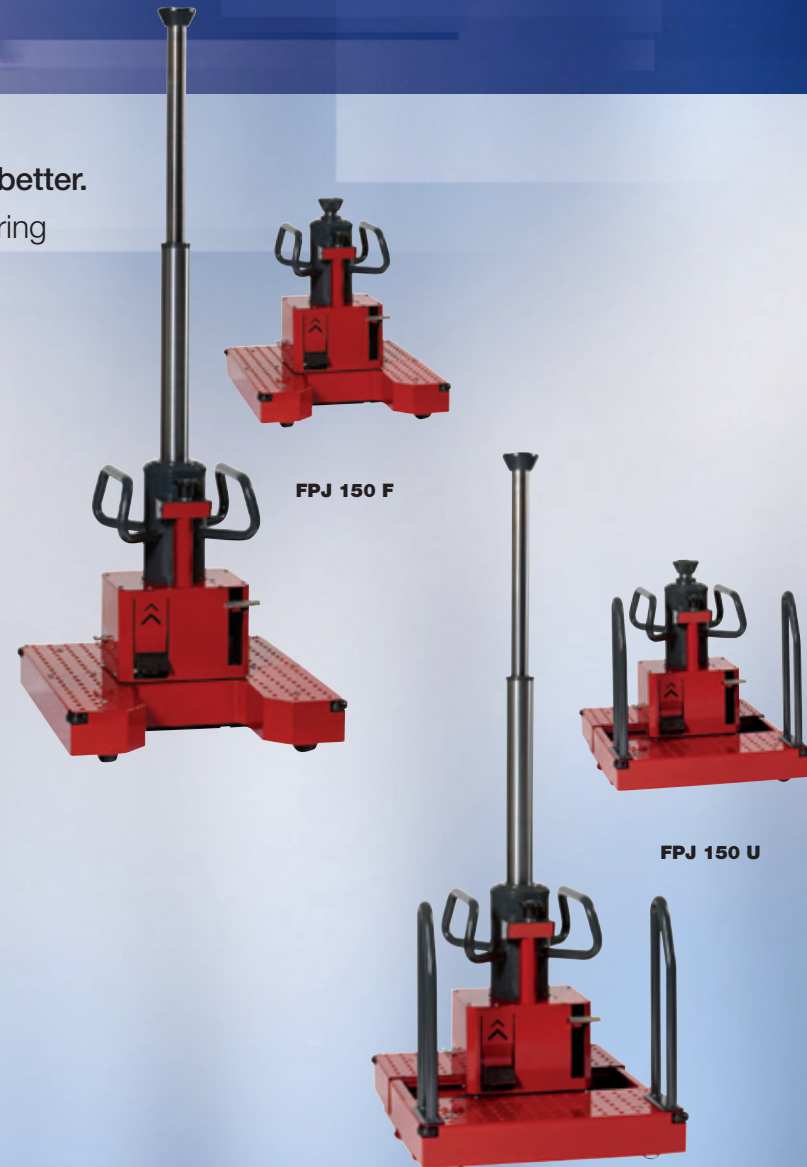
The Floor Pit Jack is an air hydraulic jack with telescopic piston, fitted with leaf spring support bearings for smooth gliding along the pit floor. This Floor Pit Jack is designed to operate on pit floor surfaces safely, thereby not depending on pit edges that are often not reinforced or sufficiently strong.

Floor Running

- + Rapid, precise air/hydraulic unit with high speed piston travel up and down
- + Built-in manual foot pump for easy and precise adjustment
- + Flexible pit jack for use both in pits and under vehicles
- + Ideal for removal and replacement of transmissions due to telescopic piston
- + Traversing piston ensures a wide reach under the vehicle and enables the mechanic to move freely back and forth in the pit (Model FPJ150U)
- + Spring loaded wheel support prevents unintended movements when lifting more than 1,760 lbs.
- + Dead man's release and safety overload valve for optimum safety

MODEL	PRODUCT#	CAPACITY	PISTON	HEIGHT**	BASE
FPJ 150 F	39660100	33,000 lbs.	Single	87"	33"X39"
FPJ 150 U*	39660200	33,000 lbs.	Single	87"	33"X42"

* Telescopic and sideways movable cylinder



Multi-Use. Versatile. Hardworking.

Floor Pit Jack Options



T4-1



T6-1

Adjustable Crossbeams

MODEL	PRODUCT#	CAPACITY	HEIGHT	ADJUST RANGE
T6-1	39630135	28,600 lbs.	3"	28"-48"
T6-2	39615135	28,600 lbs.	3"	28"-48"
T4-1	39630125	33,000 lbs.	4"	7"-29"
T4-2	39615130	33,000 lbs.	5"	7"-29"

Transmission Tables

Product #39660210 and AS3, Product #3966140

- + Capacity 1,100 lbs.
- + Table dimensions 20" x 15"
- + For single piston models



39630121

ABT Variable Support Bridge

Product #39630121

- + Capacity 33,000 lbs.
- + For safe and stable support of the vehicle
- + Open frame offers optimum traversing cylinder mobility
- + With leaf spring wheels for easy transport along the pit
- + Usable with various adapters
- + For use with FPJ jacks

AB Support Bridge

Product #39630120

- + Capacity 44,000 lbs.
- + For safe and stable support of the vehicle
- + With leaf spring wheels for easy transport along the pit
- + Usable with various adapters



Light Up Your Workspace

LED Magnetic Flood Light

Providing portable, area-specific under-vehicle lighting is vital to ensuring shop safety and efficiency. Whether techs are doing routine maintenance, removing components or installing new parts, lights brighten the environment and help reduce overall repair time. The Stertil-Koni LED Magnetic Flood Light is a portable, magnetic, high-intensity 800 lumens LED light engineered to easily affix to a broad range of metal surfaces commonly found in vehicle maintenance shops.



LED Magnetic Flood Light Set

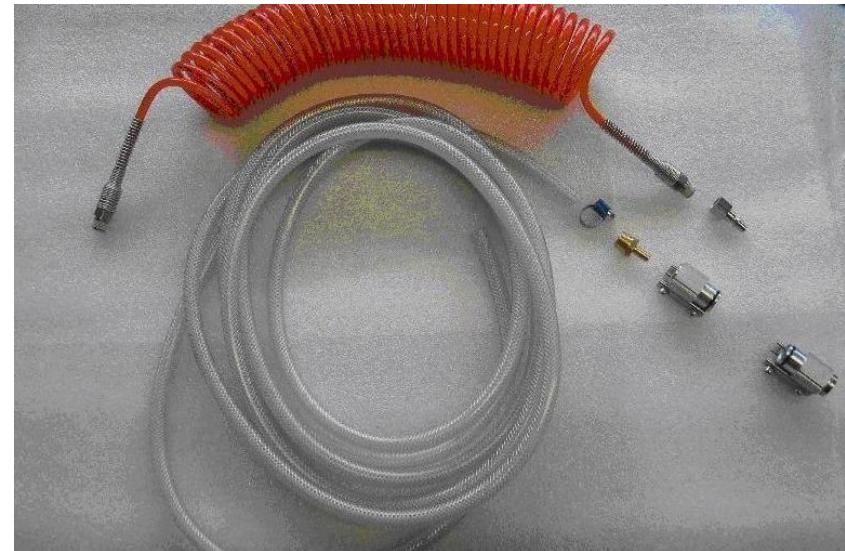
Product #69700141

- + Includes: lamp, battery, charging unit and tripod
- + Provides up to 800 lumens of directed light
- + Powered by rechargeable lithium-ion battery
- + Die-cast aluminum housing
- + IP65 dust and water resistant
- + Strong magnetic base
- + 110 VAC charging cord — Product #69700146



AIR INSTALLATION KIT

Air kit consisting of a 2500 mm 98.42" airpipe with custom made positioning of air connection and mounting materials. Air installation kit consisting of a spiral air tube and hose to connect the airkit to the air supply.



FORKLIFTS 3RD PLATFORM

Stertil-Koni accessories forklifts 3rd platform for convenient lifting 3 wheel forklifts in combination with a platform lift.

length = 1250 mm / 49"

capacity 2,000 kg / 4,400 lbs



RETRACTABLE WHEELS

Both the wireless and the cabled mobile column lifts are available with retractable wheels. This unique Stertil-Koni design is the best available on the market.

The retractable wheels prevents high point loading on the floor and reduces the floor surface pressure by a factor of 10. The system is fast, efficient, very stable and extremely reliable.



LARGE WHEEL ADAPTERS

Designed to service agricultural vehicles with extremely large diameter wheels. Designed to allow ST 1065 columns to lift vehicles with wheel diameters up to 85 inches/2160 mm

Supplied with a set of drive on platforms which remain on the floor during lifting.

- Platform width: 500 mm / 20"
- Suitable for tyres up to 750 mm / 30" width
- Capacity: 6.600 kg / 14,500 lbs



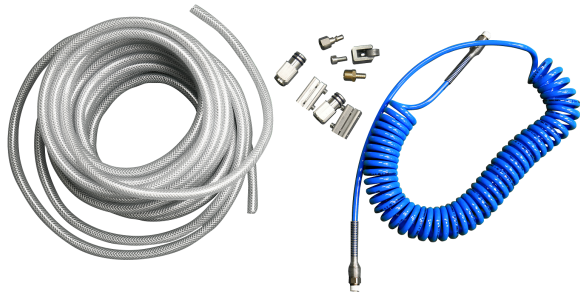
SECOND CONTROL BOX

Additional control box to be installed to allow operation of lift from either post.



AIR IN PLATFORM KIT

Boost productivity with the Stertil-Koni Air-in-Runway kit for the heavy duty SKYLIFT platform lift. Power your air tools in an instant!



WASH BAY KIT

This kit includes:

- Platforms, drive on ramps and anchoring plates hot galvanized
- Upper/lower locking teeth, as well as pull bar, galvanized + special primer and RAL color
- Lifting legs treated 3-layer mono-pox coated
- Control box fabricated completely stainless steel and lockable lid



LOWERED BASE FRAME

Specially designed for vehicles with body skirting, that requires extremely low ground clearance. This option is available on all models.



EXTRA WIDE FORKS

Specially designed for vehicles with large diameter tires. This option is only available on models ST1065, ST1082, ST 1085 & ST 1100. The extra-wide forks can handle wheel diameters up to R24.5 with a tire outside diameter up to 63 inches.



VOLTAGE OPTIONS

Power options included VAC and VDC. VAC options are 220VAC/1 phase as well as 208-575 VAC/3 phase. VDC option is 24 VDC.



SPECIAL COLORS

Special Colors: Any special RAL colors can be provided upon request.



WHEEL ADAPTERS

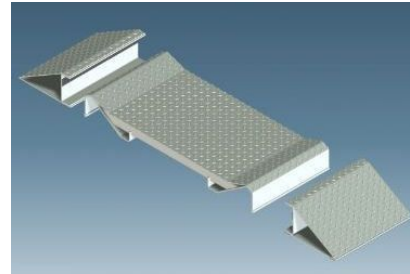
A wheel adapter is a fork reduction sleeve: The reduction sleeve is designed to narrow the fork opening to ensure that if the tire ruptures, the rim never passes through the fork.

For models that do not have adjustable forks, wheel adapters/ reduction sleeves are available to lift vehicles with small wheels, such as vans and automobiles. Vehicles with wheel diameters from R-12 to R-15 require two wheel adapters/reduction sleeves per column. Vehicles with wheel diameters from R-15 to R-17 require one wheel adapter/reduction sleeve.



AGRICULTURAL WHEEL ADAPTER

Designed to service agricultural vehicles with extremely large diameter wheels. Designed to allow ST 1065 columns to lift vehicles with wheel diameters up to 85 inches.



WEIGHT GAUGES

Weight gage display on each column presented via the ebright Smart Control System.



COMMUNICATION CABLE REELS

Retracting reels to store cables for all mobile column lifts that operate with battery controls.



LIGHT TRUCK ADAPTER

This automotive adaptor permits lifting by chassis (3 pieces) with a capacity of 15,000 lbs. per set of adapters and is available with these models: ST 1064, ST1075, ST1085 and ST1100 and comes in fixed and adjustable.



По вопросам продаж и поддержки обращайтесь:			
Алматы (7273)495-231	Казань (843)206-01-48	Новокузнецк (3843)20-46-81	Смоленск (4812)29-41-54
Архангельск (8182)63-90-72	Калининград (4012)72-03-81	Новосибирск (383)227-86-73	Сочи (862)225-72-31
Астрахань (8512)99-46-04	Калуга (4842)92-23-67	Омск (3812)21-46-40	Ставрополь (8652)20-65-13
Барнаул (3852)73-04-60	Кемерово (3842)65-04-62	Орел (4862)44-53-42	Сургут (3462)77-98-35
Белгород (4722)40-23-64	Киров (8332)68-02-04	Оренбург (3532)37-68-04	Тверь (4822)63-31-35
Брянск (4832)59-03-52	Краснодар (861)203-40-90	Пенза (8412)22-31-16	Томск (3822)98-41-53
Владивосток (423)249-28-31	Красноярск (391)204-63-61	Пермь (342)205-81-47	Тула (4872)74-02-29
Волгоград (844)278-03-48	Курск (4712)77-13-04	Ростов-на-Дону (863)308-18-15	Тюмень (3452)66-21-18
Вологда (8172)26-41-59	Липецк (4742)52-20-81	Рязань (4912)46-61-64	Ульяновск (8422)24-23-59
Воронеж (473)204-51-73	Магнитогорск (3519)55-03-13	Самара (846)206-03-16	Уфа (347)229-48-12
Екатеринбург (343)384-55-89	Москва (495)268-04-70	Санкт-Петербург (812)309-46-40	Хабаровск (4212)92-98-04
Иваново (4932)77-34-06	Мурманск (8152)59-64-93	Саратов (845)249-38-78	Челябинск (351)202-03-61
Ижевск (3412)26-03-58	Набережные Челны (8552)20-53-41	Севастополь (8692)22-31-93	Череповец (8202)49-02-64
Иркутск (395)279-98-46	Нижний Новгород (831)429-08-12	Симферополь (3652)67-13-56	Ярославль (4852)69-52-93
Россия (495)268-04-70	Киргизия (996)312-96-26-47	Казахстан (7172)727-132	